

SURDY

A U T O C L A V E S

Waterspray Air Overpressure Retorts

TYPES A-142, A-144 AND A-146



CE

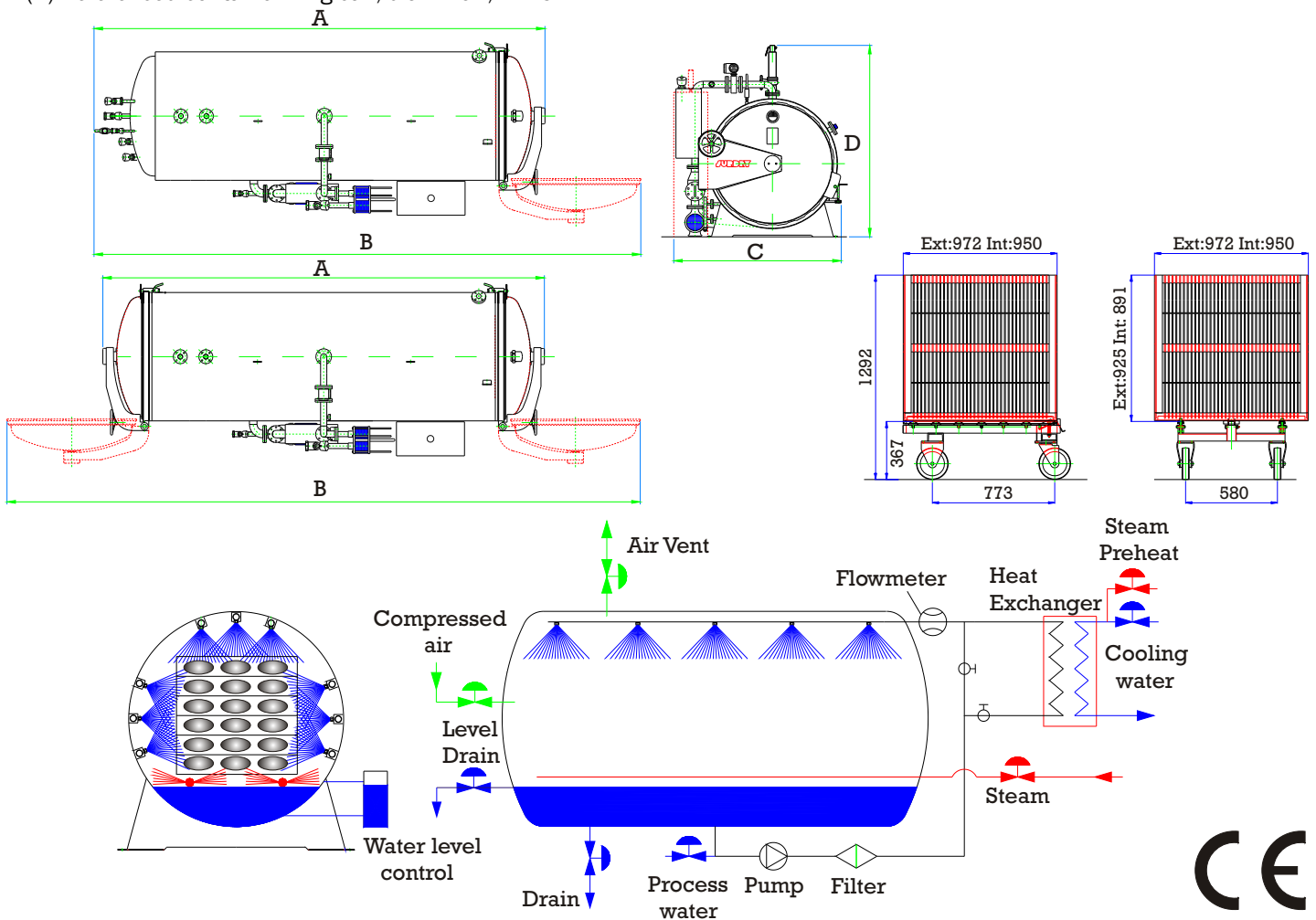
For foods in rigid and flexible retortable packs

- Steam-Waterspray mix process with only 100 litres per basket
- Top shower for cans and glass jars plus side shower for pouches and trays.
- Indirect cooling system by heat exchanger allows water recovery.
- All vessel, pipework and valves and heat exchanger in stainless steel materials.
- Insulated shell with mirror polished stainless steel cladding.
- PLC control with modem connection allows remote troubleshooting and servicing.
- Process monitoring in the operator interface with complete information of temperature, pressure, time and flow.
- Easy product recipe setup with password protected access.
- Optimum heat distribution ($\pm 0,5\text{ }^{\circ}\text{C}$)
- Accurate pressure control ($\pm 0,05\text{ bar}$)
- Lowest steam and water consumption

TECHNICAL SPECIFICATIONS:

Types:	A-142	A-144	A-146	A-144-T 2 doors	A-146-T 2 doors
Length "A"	3285	5130	7165	5060	7095
Length "B"	4407	6252	8287	7315	9350
Width "C"	1965	1965	1965	1965	1965
Length "D"	2070	2272	2370	2272	2370
Capacity (number of baskets)	2	4	6	4	6
Capacity (*)	1190	2380	3570	2380	3570
Weight (empty retort) (kg)	1350	1910	2490	2200	2800
Weight (loaded retort) (kg)	3150	5510	7890	5800	8200
Installed power (kW)	4.5	8.75	12.3	8.75	12.3
Steam consumption (kg/batch)	164	315	467	315	467
Water consumption (l/batch)	2820	5639	8459	5639	8459
Air consumption (l/batch)	2954	5031	7109	5031	7109
Maximum service temperature (°C)	150	150	150	150	150
Maximum service pressure (bar)	5	5	5	5	5
Steam supply pressure (bar)	5-6	5-6	5-6	5-6	5-6
Water supply pressure (bar)	3-5	3-5	3-5	3-5	3-5

(*) Referenced container: 1kg can, diam.102, h119mm



For more information, contact our North American distributors:



SURDRY S.L.
 P.I. Trañapadura · 48220 ABADIANO - Vizcaya , ESPAÑA
 Tel. 34 94681 4171 · Fax 34 94681 3452
 E-mail: surdry@surdry.com · Web: www.surdry.com

STOCK America Inc. Sterilization Systems Division
 2508 Reliance Avenue Apex, NC 27539
 Phone 919.362-4444 Fax 919 362-4448
 E-Mail: davep@stockamerica.com Web:www.stockamerica.com